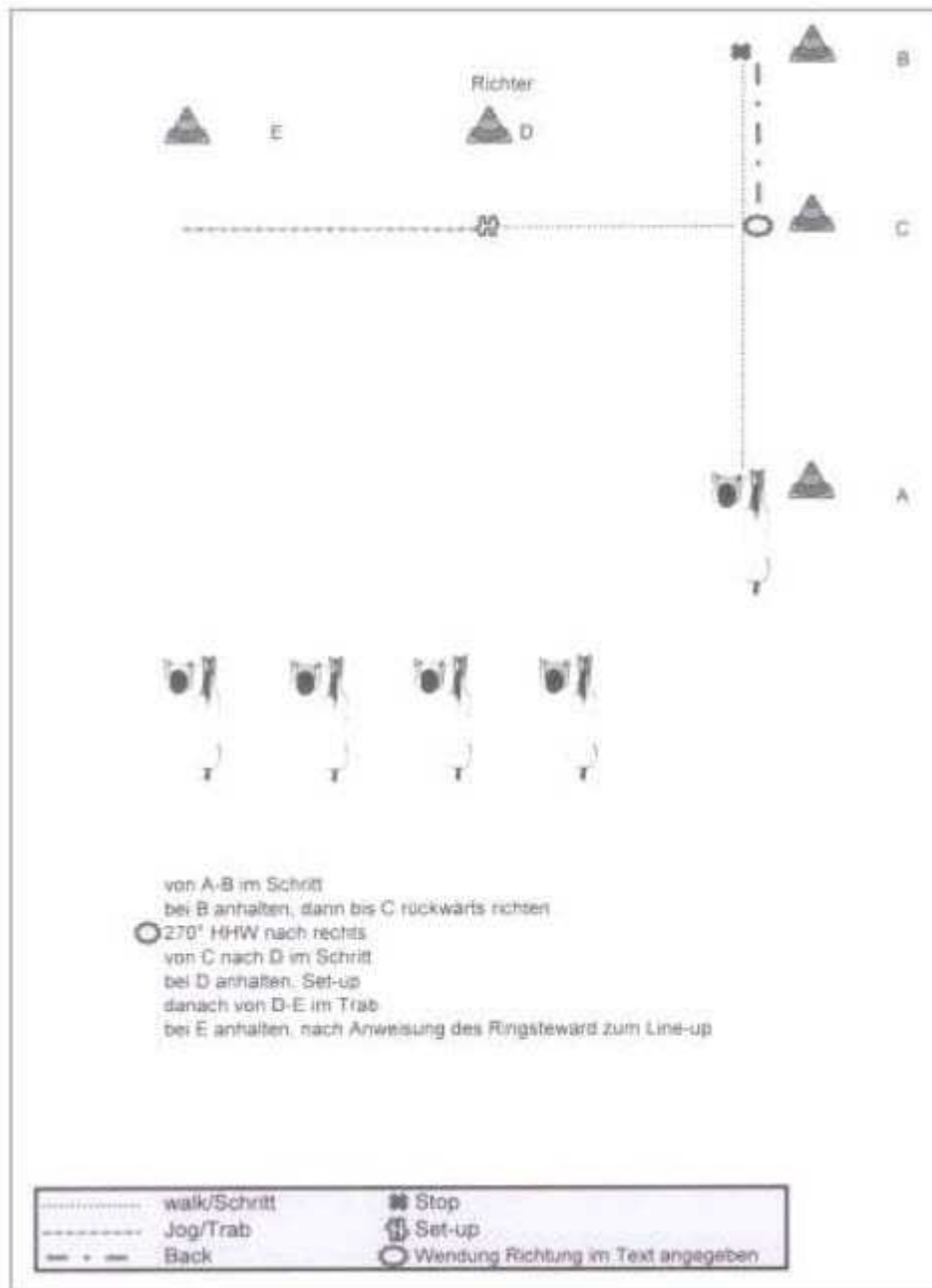
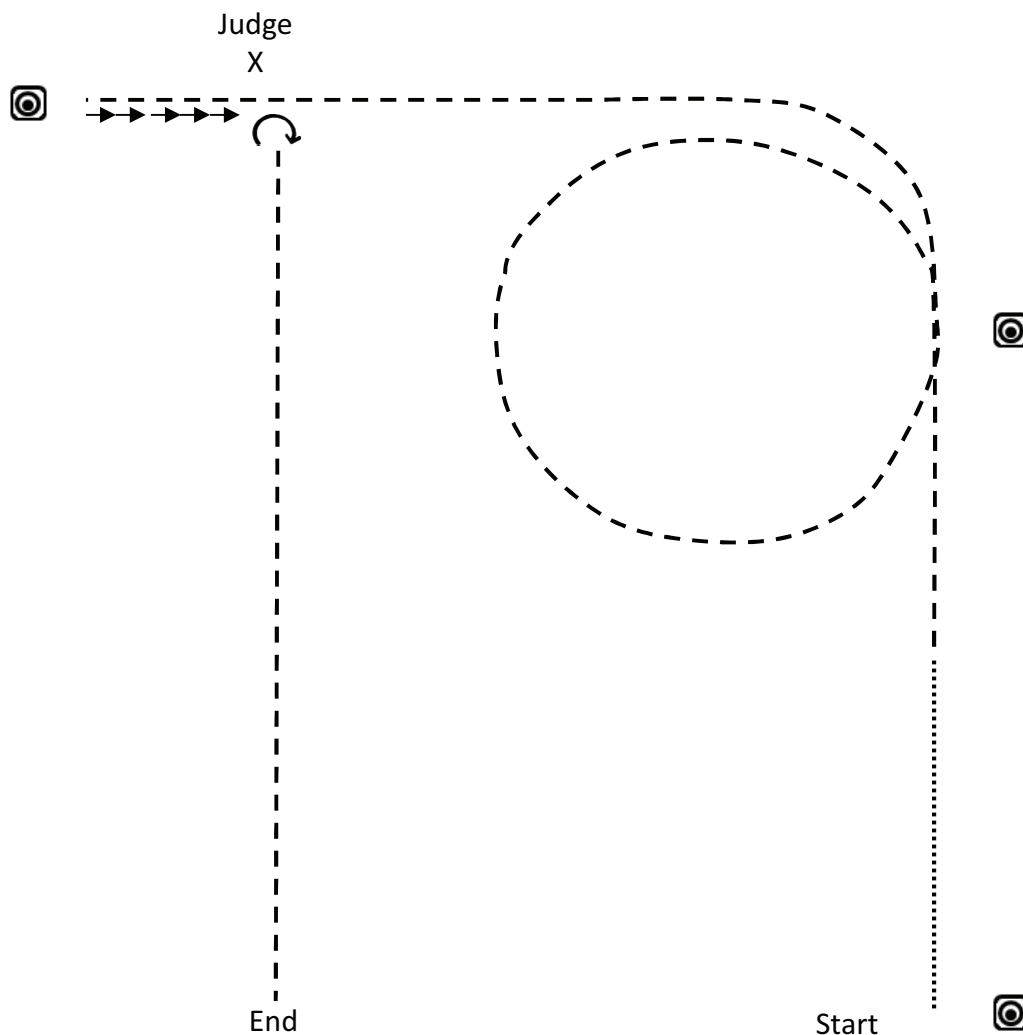




Showmanship LK4A/LK4B (SSH)



LK4A / LK4B Showmanship

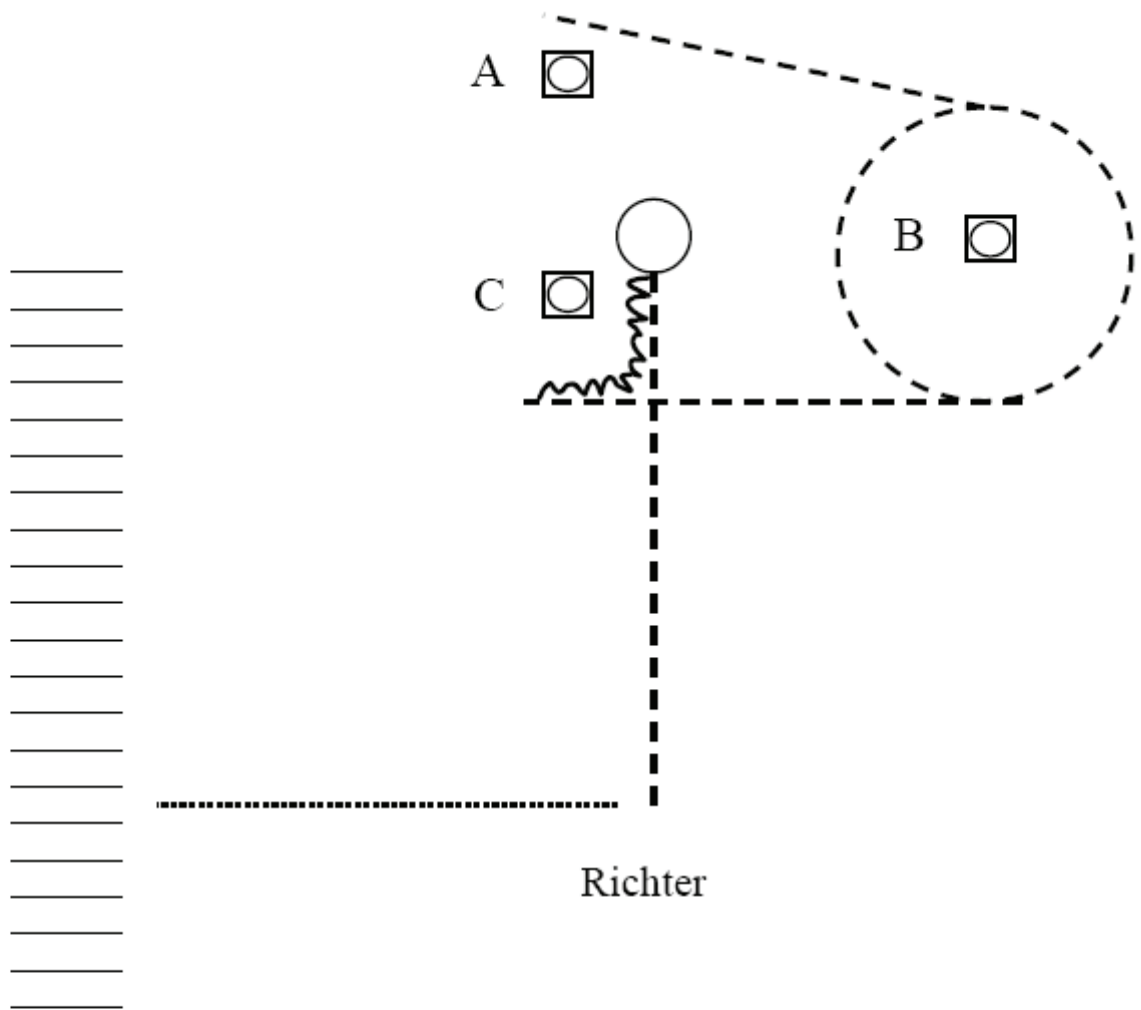


- Walk halfway to marker
- Jog. Jog circle to third marker
- Back-up until even with judge
- Set up for inspection
- After dismissal, turn 3/4 to the right
- Jog out





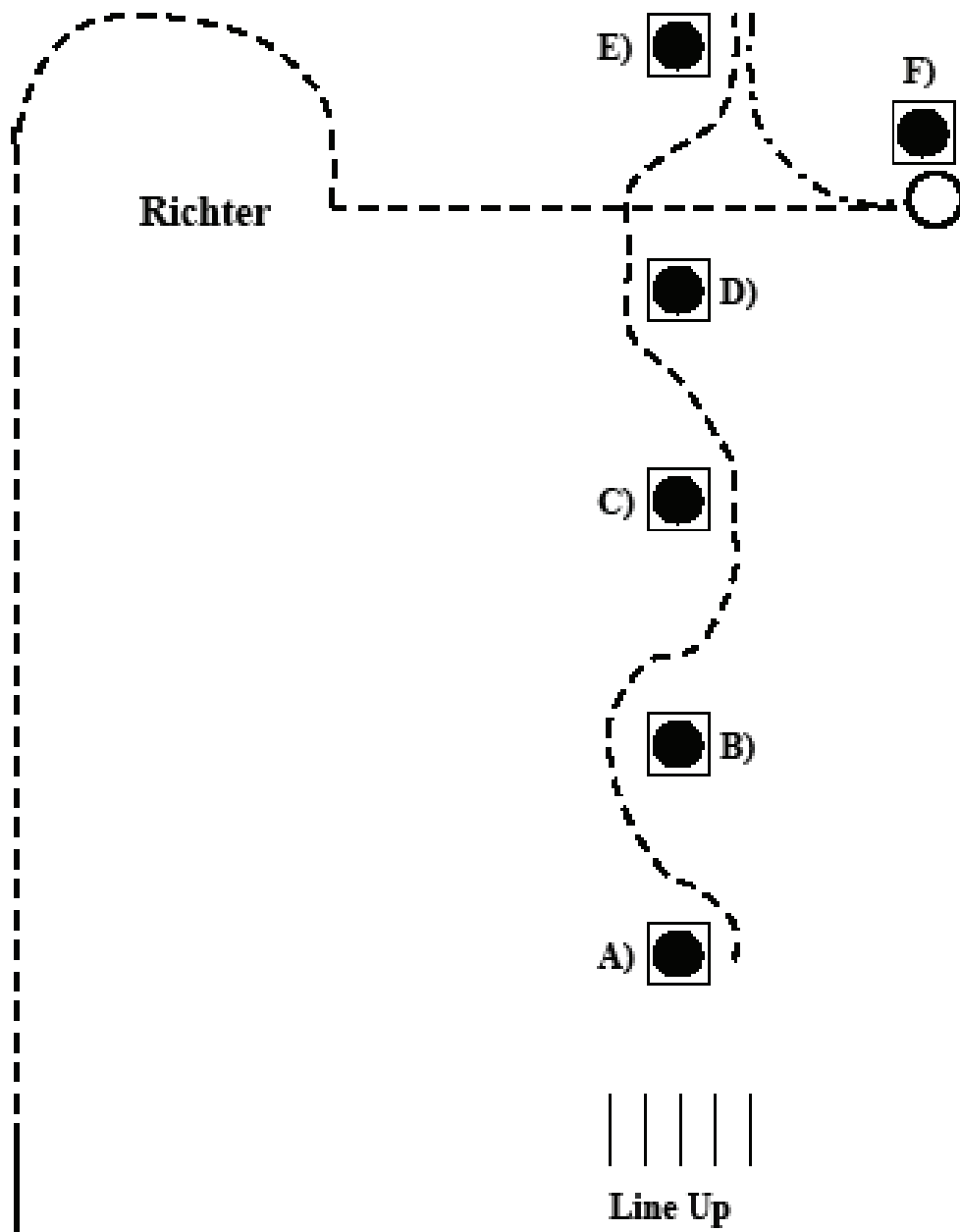
LK 3/4 A & B; FM Greenhorse/-horn Showmanship at Halter



- Aus dem Stand Jog um B zu C, neben C Stop.
- Back, dann 360 Grad Hinterhandwendung
- Jog zum Richter und Set Up.
- Im Schritt zum Line Up

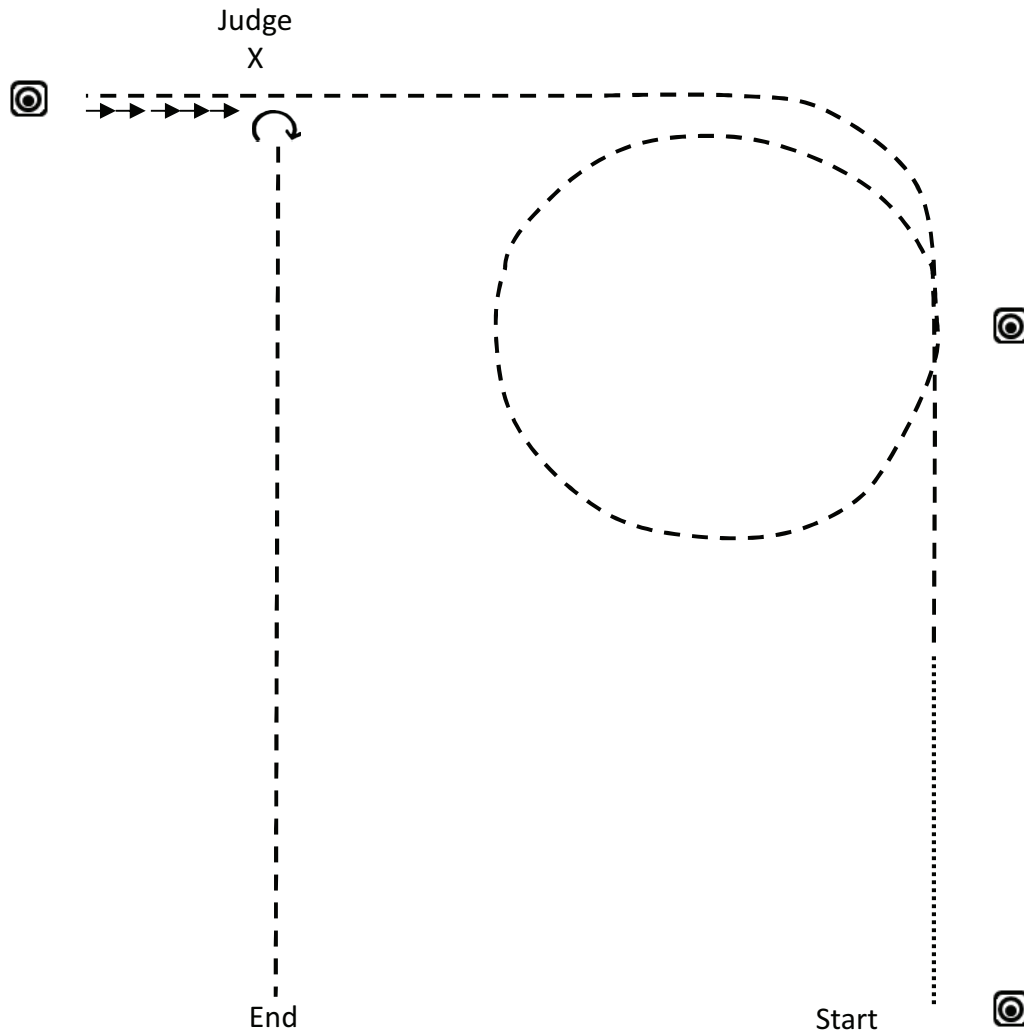


LK 1/2 A & B; FM Open Showmanship at Halter



**Von A aus dem Stand Jog im Slalom zu E Stop
Back Up bis F, dann 360 Grad Hinterhandwendung
Im Jog zum Richter Set Up
90 Grad Hinterhandwendung und im Jog zum Line Up.**

Novice Amateur / Novice Youth Showmanship



- Walk halfway to marker
- Jog. Jog circle to third marker
- Back-up until even with judge
- Set up for inspection
- After dismissal, turn 3/4 to the right
- Jog out

